



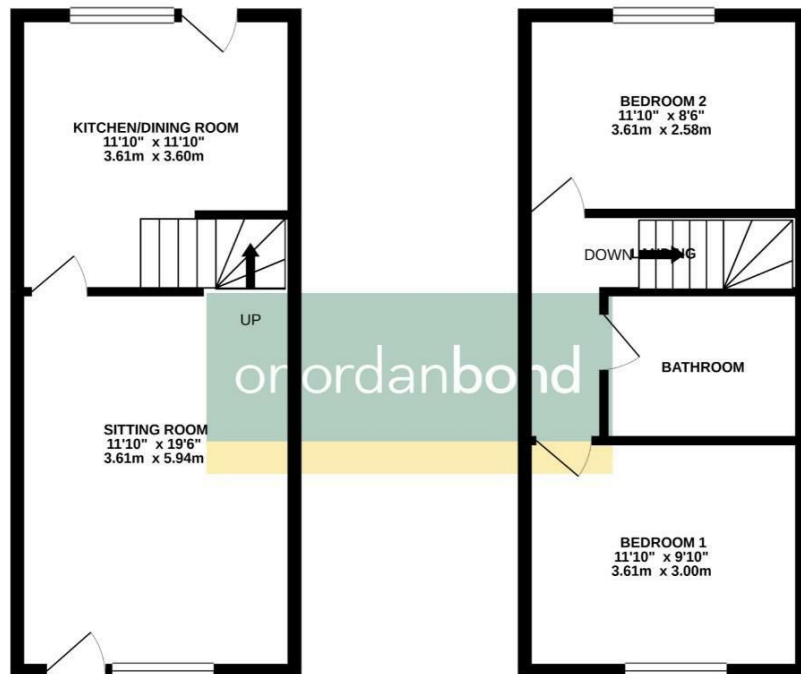
36 Breach Close
Brixworth, Northamptonshire

oriordanbond
TOWN & COUNTRY



GROUND FLOOR

1ST FLOOR



TOTAL FLOOR AREA: 657sq.ft. (61.0 sq.m.) approx.
Whilst every attempt has been made to ensure the accuracy of the floorplan contained here, measurements of doors, windows, rooms and any other items are approximate and no responsibility is taken for any error, omission or misstatement. This plan is for illustrative purposes only and should be used as such for any prospective purchaser. The services, systems and appliances shown have not been tested and no guarantee as to their operability or efficiency can be given.
Made with floorplan 6/2021

36 Breach Close

Brixworth
NN6 9HT

75% SHARED
OWNERSHIP £145,000

This mid terrace house is offered for sale on a 75% shared ownership basis and has a south facing garden and a detached garage. The property is situated at the end of a cul-de-sac overlooking a green.

Accommodation comprises sitting room, re-fitted kitchen/breakfast room, two double bedrooms with fitted wardrobes to master and a modern bathroom. Outside is an open plan front garden and parking opposite with a detached single garage. To the rear is an enclosed garden mainly laid to lawn with decking area. Further benefits include gas radiator heating and uPVC double glazing. (A/657/M)

Additional information

- Council Tax Band: B
- Energy Efficiency Rating: C

Viewing

Viewing strictly by appointment – details below

Disclaimer

O'Riordan Bond Estate Agents Limited has not tested apparatus, equipment, fittings or services and so cannot verify they are in working order. The buyer is advised to obtain verification from their solicitor or surveyor.

O'Riordan Bond Brixworth Sales
01604 880077

brixworth@oriordanbond.co.uk